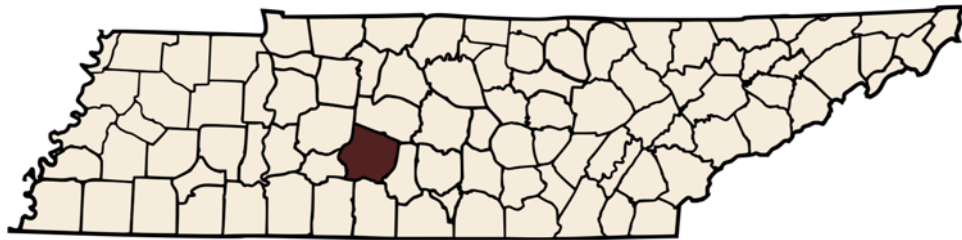




MAURY COUNTY

QUICK FACTS

2017 Population: **92,163**
 Age <18: **23.5%**
 Age 65+: **15.5%**
 Median Age: **39**
 Percent Rural: **41.6%**
 (Census 2010, 2017)



HEALTH OUTCOMES IN MAURY COUNTY

Maury
 TN
 US



Fair/Poor Health



Adult Diabetes



Poor Mental Health Days
 (out of 30)



Obese Adults



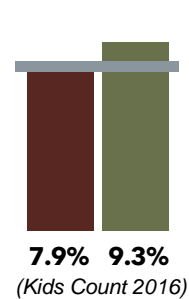
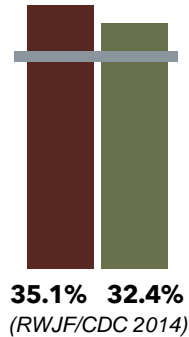
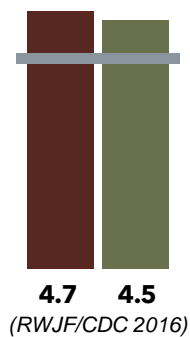
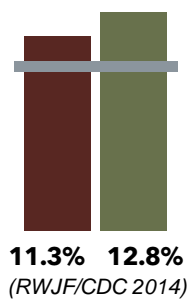
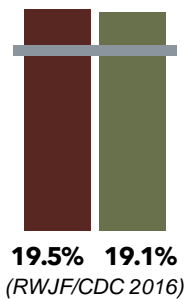
Overweight/Obese Students



Low Birth Weight Babies

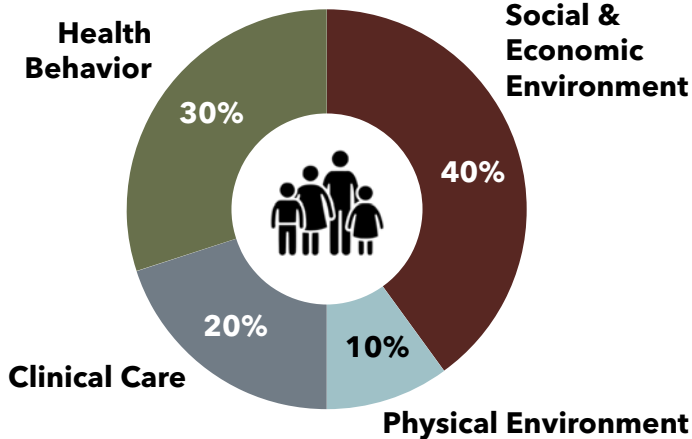
ranked
16
 out of 95 TN counties

Overall Health Ranking
 (RWJF 2018)



THE DRIVERS OF HEALTH

Our behaviors, physical, social, and economic environments, and access to clinical care are all major drivers of health.



The factors that drive our health are complex and interconnected. They can affect each other while also influencing our health and well-being.

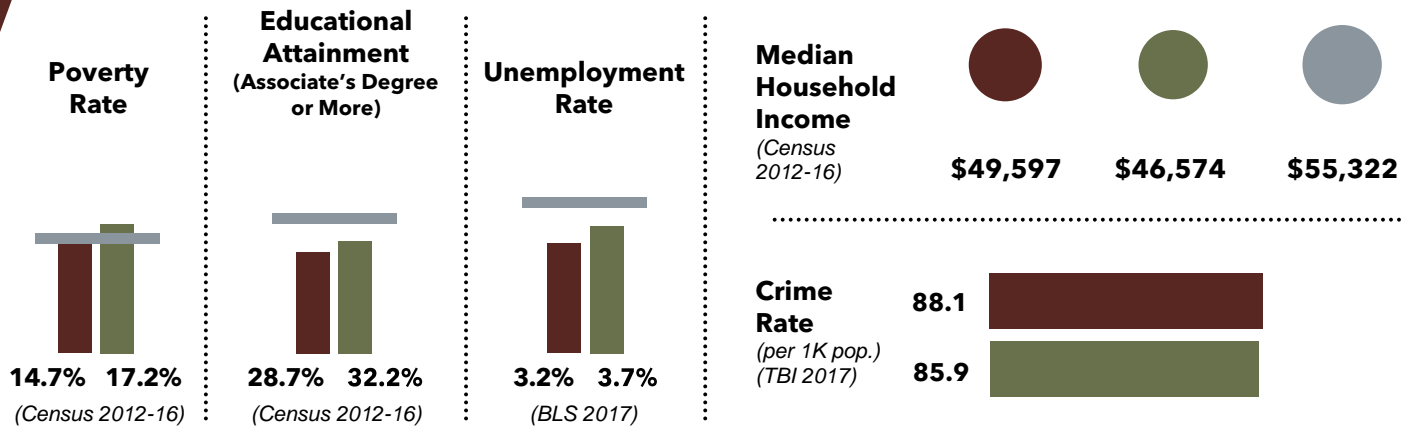
For more details, visit www.SycamoreInstituteTN.org/Countries.

MAURY COUNTY

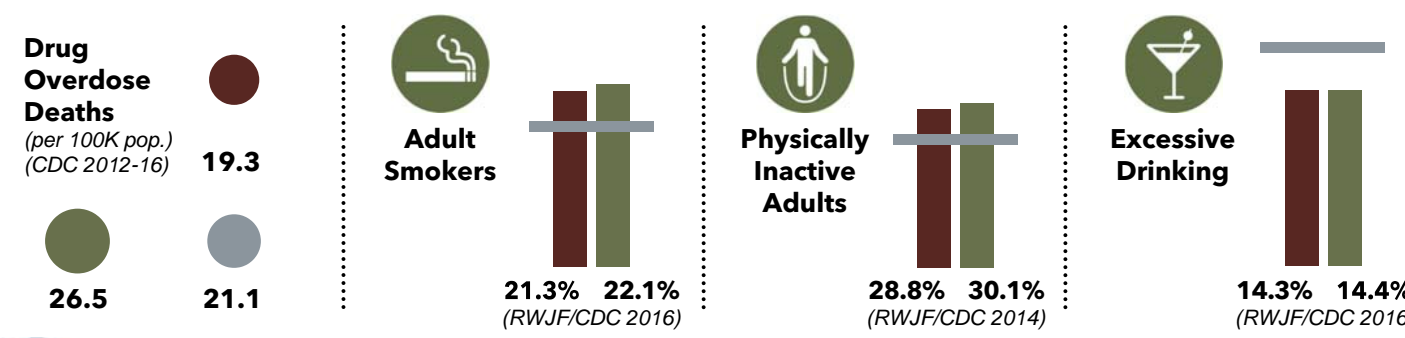
EXAMPLES OF THE DRIVERS OF HEALTH



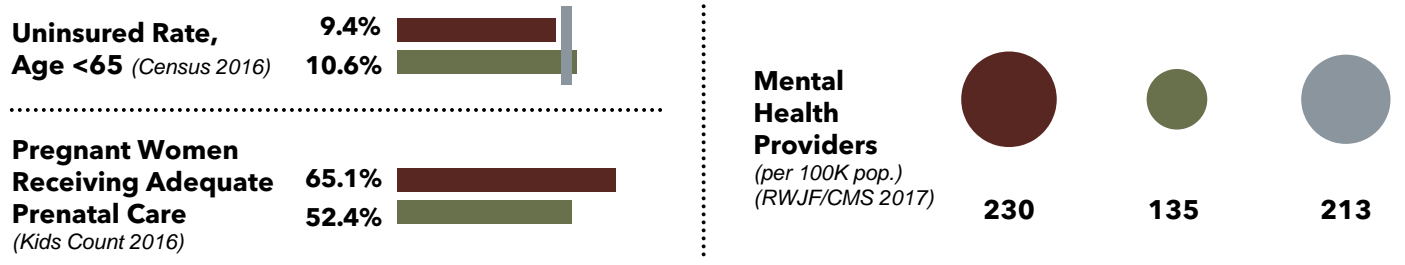
SOCIAL & ECONOMIC ENVIRONMENT influences 40% of population health



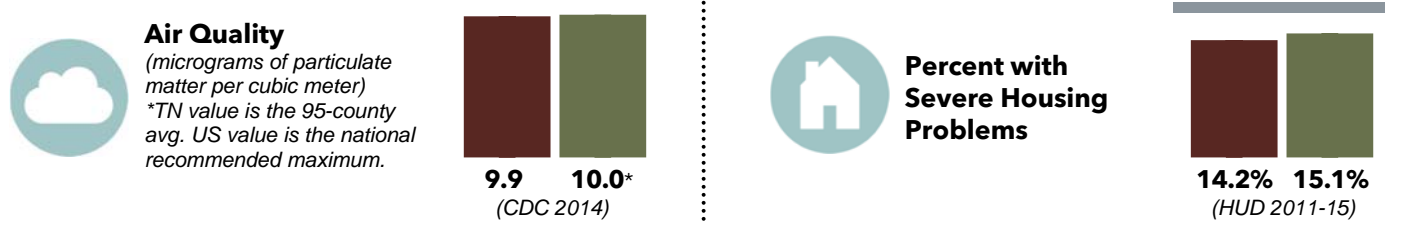
HEALTH BEHAVIOR influences 30% of population health



CLINICAL CARE influences 20% of population health



PHYSICAL ENVIRONMENT influences 10% of population health



For more details, visit www.SycamoreInstituteTN.org/Countries.

MAURY COUNTY

DATA APPENDIX

	Maury County		TN	US
	Value	Rank ⁺⁺		
QUICK FACTS:				
Population (2017)	92,163	16	6,715,984	325,719,178
% of population under age 18 (2017)	23.5%	19	22.4%	22.6%
% of population age 65+ (2017)	15.5%	81	16.0%	15.6%
Median age (2017)	39	81	39	38
% of population residing in a rural area (2010)	41.6%	76	34.4%	21.0%
HEALTH OUTCOMES:				
% of adults who rate their health as "poor" or "fair" (2016)	19.5%	32	19.1%	16%
% of adults age 20+ diagnosed with diabetes (2014)	11.3%	6	12.8%	9.6%
Avg # of mentally unhealthy days reported in the past month (2016)	4.7	29	4.5	3.8
% of adults who are obese (2014)	35.1%	78	32.4%	28%
% of public school students who are overweight or obese (2017)	41.7%	40	39.2%	n/a ⁺
% of births that are considered low birth weight births (2016)	7.9%	19	9.3%	8.2%
SOCIAL & ECONOMIC ENVIRONMENT:				
% of people with incomes below the poverty level (2012-2016)	14.7%	12	17.2%	15.1%
% of adults age 25+ with at least an associate's degree (2012-2016)	28.7%	17	32.2%	38.5%
% of labor force that is unemployed (2017)	3.2%	8	3.7%	4.4%
Median household income (2012-2016)	\$49,597	13	\$46,574	\$55,322
# of crimes per 1K population (2017)	88.1	81	85.9	n/a ⁺
HEALTH BEHAVIOR:				
# of drug overdose deaths per 100K population (2012-2016)	19.3 ⁺	22 ⁺⁺	26.5	21.1
% of adults who currently smoke cigarettes (2016)	21.3%	38	22.1%	17.1%
% of adults age 20+ reporting no leisure-time physical activity (2014)	28.8%	12	30.1%	23%
% of adults reporting binge or heavy drinking (2016)	14.3%	71	14.4%	18%
CLINICAL CARE:				
% of individuals under age 65 who are uninsured (2016)	9.4%	12	10.6%	10.0%
% of pregnant women receiving adequate prenatal care (2016)	65.1%	18	52.4%	n/a ⁺
# of mental health providers per 100K population (2017)	230 ⁺	4 ⁺⁺	135	213
PHYSICAL ENVIRONMENT:				
Avg annual micrograms of particulate per cubic meter of air (2014)	9.9	35	10.0 ⁺⁺⁺	12.0 ⁺⁺⁺
% of households with at least 1 severe housing problem (spend >50% of income on housing, overcrowded housing, or lack of complete kitchen or plumbing) (2011-2015)	14.2%	55	15.1%	18.4%

⁺ "n/a" means that data are not available. In some cases, national data comparable to state/county data are unavailable. In others, low figures in some counties were suppressed for privacy reasons.

⁺⁺ For "Quick Facts," a rank of 1 indicates highest value. For all other measures, a rank of 1 is best and 95 worst. For example, the county with the highest diabetes rate ranks 95th. Due to data availability, only 72 counties are ranked for overdose deaths and 87 counties for mental health providers.

⁺⁺⁺ TN value represents the 95-county average. US value represents the national recommended maximum.

For more details, visit www.SycamoreInstituteTN.org/Countries.