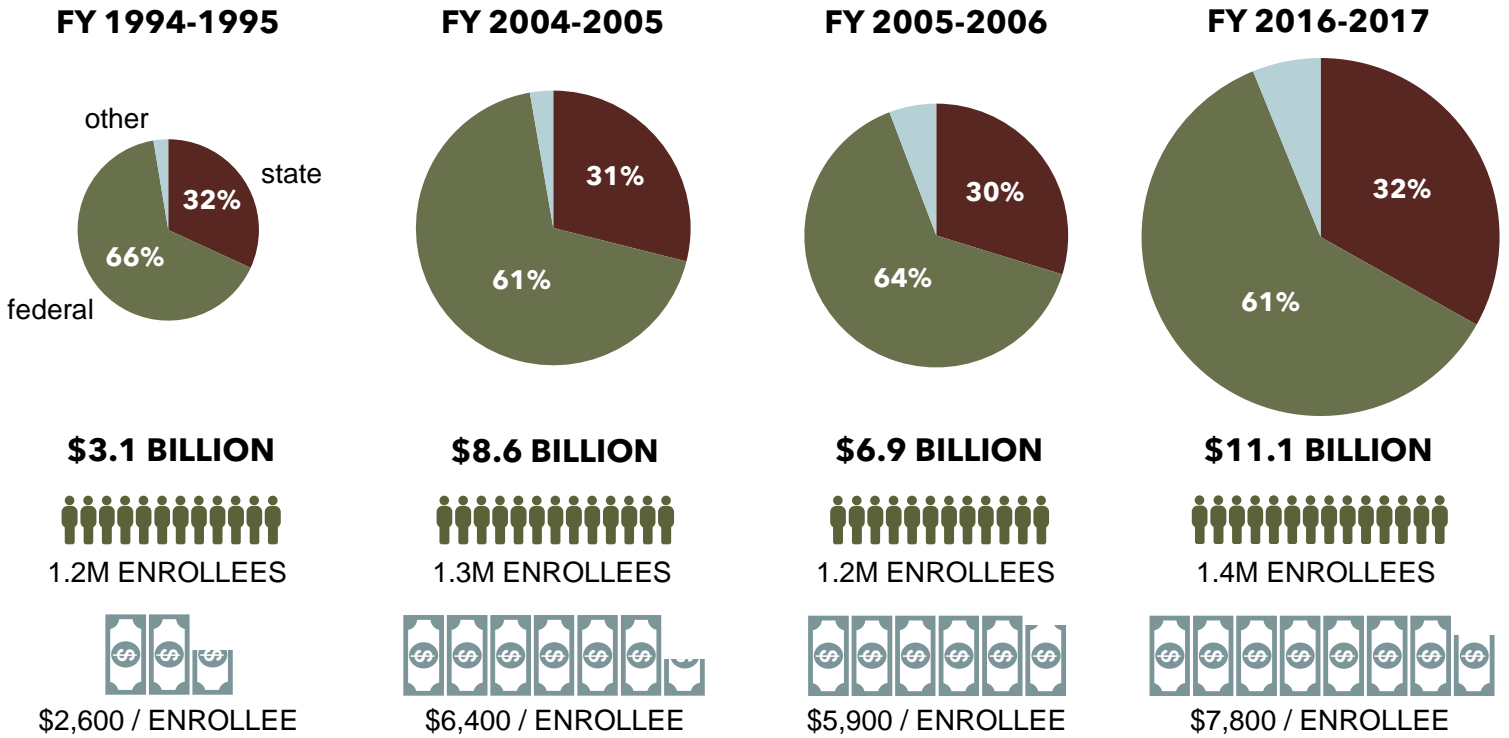


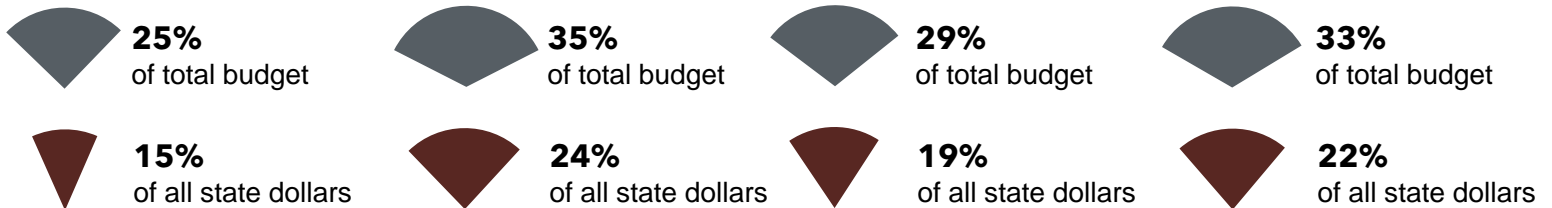
TENNCARE 101

PROGRAM FUNDING AND ENROLLMENT

FUNDING & ENROLLMENT HISTORY



SHARE OF TOTAL STATE BUDGET



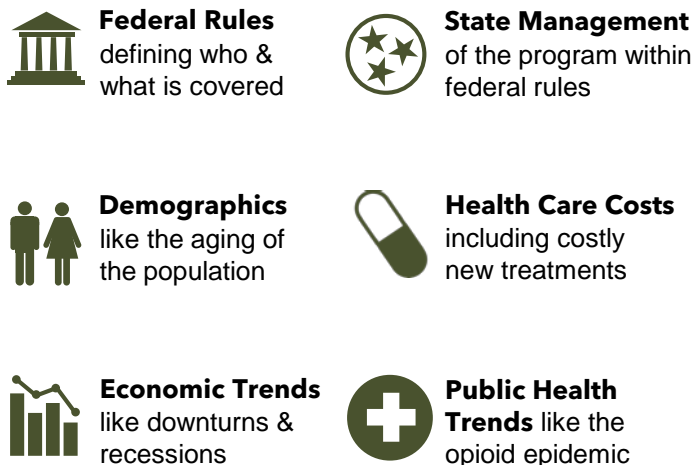
EXPANSION

250k
more
UNINSURED
TENNESSEANS
could become
eligible

\$3 BILLION
TN's share of est.
\$30-\$35B total
NET COST
OF EXPANSION
(2018-2027)

KEY FACTS

WHAT DRIVES TENNCARE SPENDING?



Over the last 2 decades,
ANNUAL CHANGES
IN TOTAL SPENDING
have ranged from -19% to +20%.

