
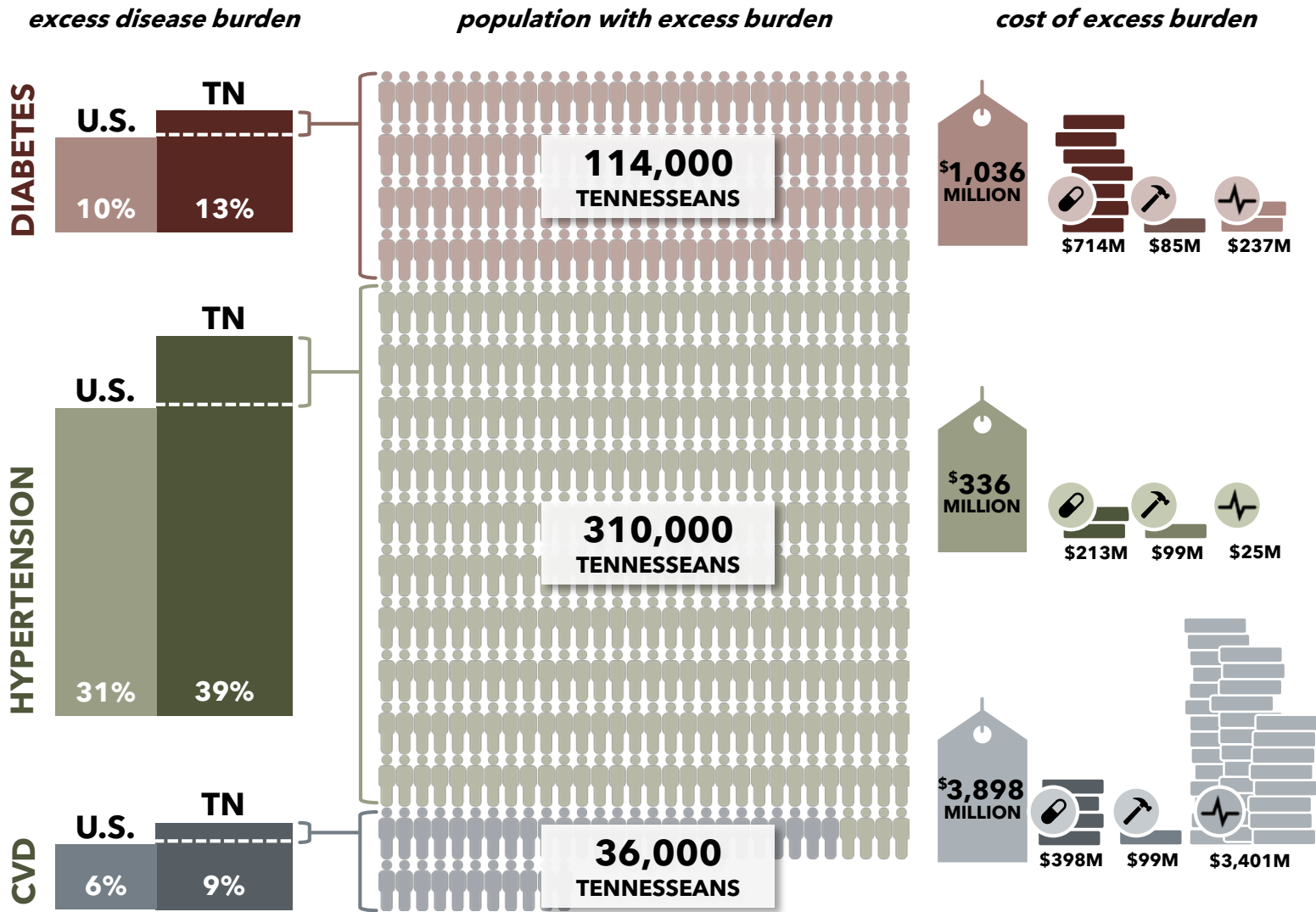


# THE ECONOMIC IMPACT OF CHRONIC DISEASE IN TENNESSEE

TENNESSEE'S HIGH RATES OF CHRONIC DISEASE COME WITH A COST

Tennessee's excess burden of diabetes, hypertension, and cardiovascular disease (CVD) affected **460,000 Tennesseans** and cost nearly **\$5.3 Billion** in direct medical care , lost productivity , and premature death  in 2015.



Our environments (physical, social, and economic), behaviors, and clinical care all influence health.



Studying the state's excess disease burden sets an aspirational but realistic benchmark.



Tennesseans' health has a complex and mutually influential relationship with our economic prosperity